

*Please join us for an interactive discussion*

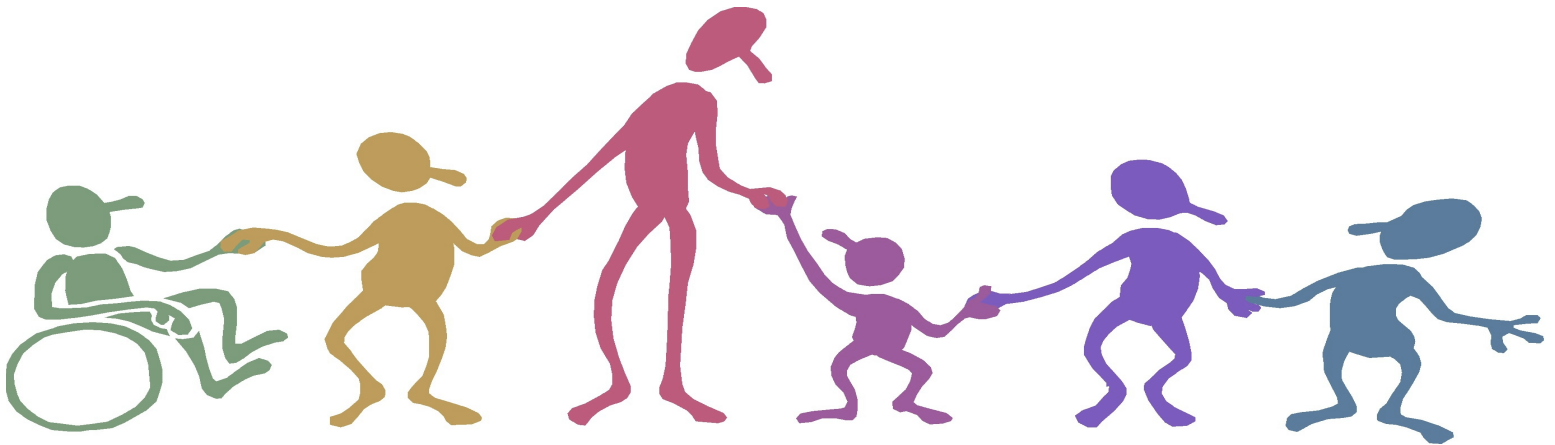
# Looking at the Broader Context of Health: The Role of Social Workers

## Discussion Leaders:

Janet Liechty, PhD, School of Social Work and College of Medicine  
Sherrie Faulkner, LCSW, Director of BSW Field Education, School of  
Social Work

## Clinical Social Work Panelists:

Monica Cherry, LCSW (Mental Health)  
Demetria Candler, LCSW (Child Welfare)  
Mary Lou Bedient, LCSW (Healthcare)



**Wednesday November 12th, 2014**

**5-6pm**

Micro and Nanotechnology Laboratory

208 N. Wright St.

Room 1000

Dinner will be served

***Sponsored by Focal Point: Multidisciplinary Approach to Addressing  
Health Care Disparities***

**an initiative of the Graduate College**

Fostering interdisciplinary research and opportunities for the graduate community at Illinois

